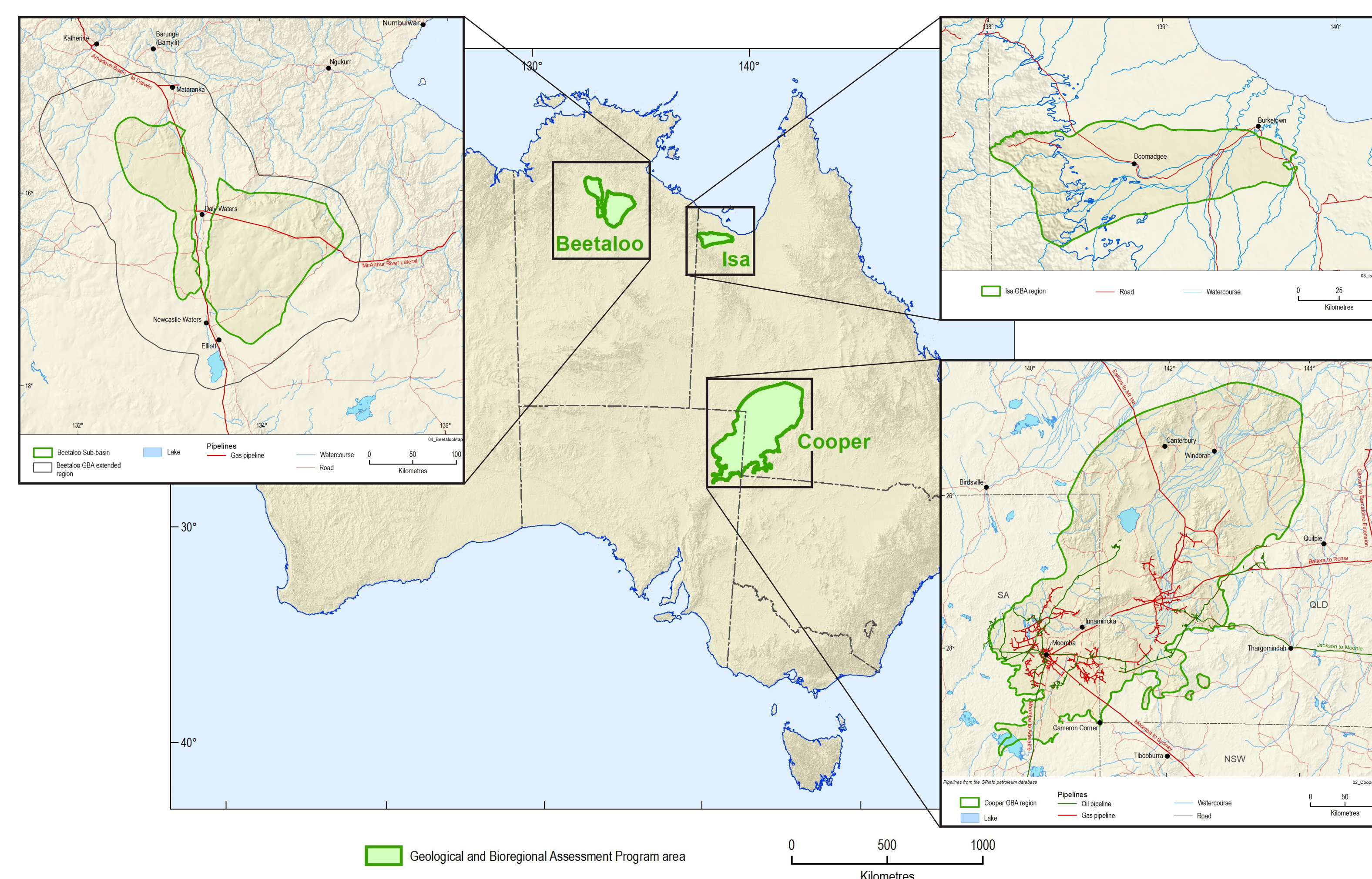
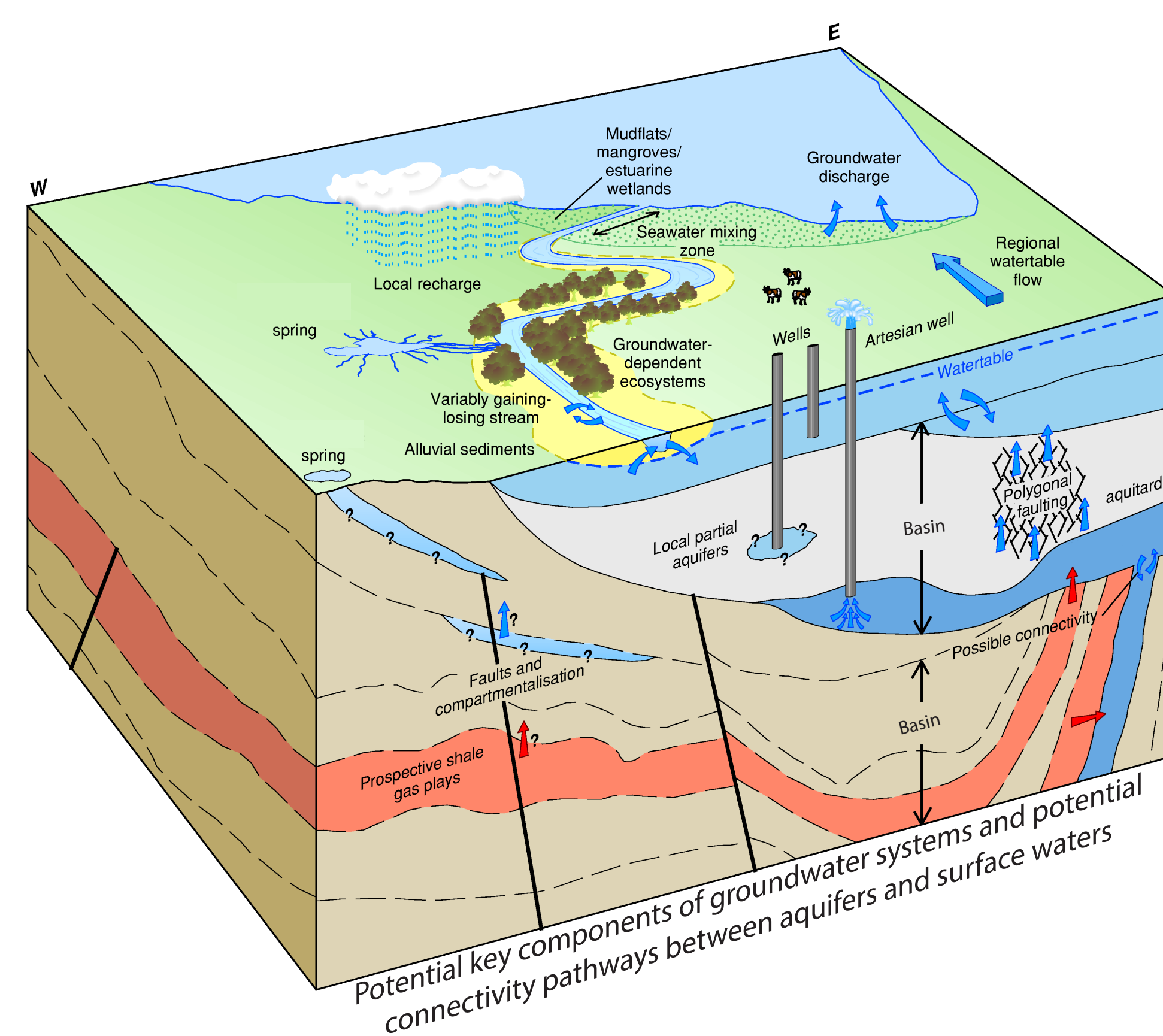


The Australian Government has committed \$35.4 million for the Geological and Bioregional Assessments program to provide independent scientific advice on the potential impacts of shale and tight gas development on water and the environment.



## Isa GBA region

- Identifying and conceptualising regional groundwater systems.
- Identifying poorly understood portions of the regional system and highly productive aquifers.
- Identifying poorly understood surface water-groundwater connectivity and interactions of GDE's and stream flow contributions.
- Surface water system conceptualisation.
- Region scale knowledge review.



- Identifying and conceptualising regional groundwater systems.
- Description of surface and groundwater connectivity.
- Identification and conceptualisation of potential inter-aquifer connections.
- Surface water conceptualisation.
- Potential industry water sources and impact.
- Region scale knowledge review.

- Description and conceptualisation of regional ground water systems.
- Conceptualisation of potential inter-aquifer connectivity.
- Description of surface and groundwater connectivity.
- Evidence for potential hydrological connections.
- Surface water conceptualisation and potential industry impact.
- Region scale knowledge review.

**Beetaloo** - Baseline studies to support alignment with Northern Territory government SREBA

Special Environment and Heritage  
Parkes, ACT, Australia

